



# Weekly report on the epidemiology of COVID-19 in Ireland

## Week 44, 2023

- The epidemiological weeks in this report, run from Sunday to Saturday. Please refer to the [HPSC website](#) for a complete list of epidemiological weeks with start and end dates for 2020-2023.
- Data for this report are based on cases notified on the Computerised Infectious Disease Reporting (CIDR) up to midnight 04/11/2023. Data were extracted from CIDR system on 07/11/2023. Data are provisional and subject to ongoing review, validation and update. As a result, figures in this report may differ from previously published figures.
- Data should be interpreted in the context of the current testing policy. Testing policies can affect the number and age distribution of confirmed cases notified on CIDR. Information on the current testing policy in Ireland can be found [here](#)

## Key points

### Notified confirmed cases

- In week 44 (between October 29 and November 04 2023) there were 418 new confirmed COVID-19 cases reported on CIDR. This is a decrease of 20.2% compared to week 43 when there were 524 confirmed COVID-19 cases notified.
- The highest number of new confirmed COVID-19 cases in week 44 was in the age group of 75-84 years with 19.6% of notified cases in week 44.

### Laboratory data of SARS-CoV-2 PCR tests

- In week 44, a total of 3,889 SARS-CoV-2 tests were performed, of which 424 (10.9%) were positive. This is a decrease compared to the previous week, 43, when 11.4% were positive.

### Deaths

- Since the start of the pandemic 9,345 COVID-19 deaths among notified COVID-19 cases have been reported on CIDR. Of these, 2 had a date of death in week 44.

**Table 1:** Summary characteristics of COVID-19 cases notified in Ireland during week 44, 2023 and 2023 to date

	Week 44, 2023		Total 2023	
	Number	Percentage	Number	Percentage
Total number of confirmed cases	418		30,888	
Incidence rate of confirmed cases per 100,000 population	8.8		648.7	
<b>Severe cases</b>				
Number of cases hospitalised	194*	46.41	13,006*	42.11
Number of cases admitted to ICU	0*	0.00	129*	0.42
Number of deaths among confirmed cases	1*	0.24	672*	2.18

*\* The number of cases hospitalised, cases admitted to ICU and deaths described in the above table relate only to COVID-19 cases who were notified during this reporting period, and where the outcome is known at the time of reporting. It does not reflect all hospitalisations, ICU admissions and deaths related to COVID-19 which occurred during the period covered by the report. It also does not reflect the final number of cases hospitalised, admitted to ICU or deaths for these cases notified during this period as the outcome may not yet have occurred, or is yet to be notified*

## Confirmed cases of COVID-19

Since the start of 2023, a total of 30,888 confirmed COVID-19 cases have been notified on CIDR. In the past week, week 44 2023, 418 confirmed COVID-19 cases were reported on CIDR. This is a decrease of 20.2% compared to week 43 when 524 confirmed COVID-19 cases were notified. Figure 1 shows the epidemiological curve of COVID-19 cases notified in Ireland for the last one year to week 44 2023. Data since the start of the pandemic is available on the [Epidemiology of COVID-19 in Ireland infohub](#).

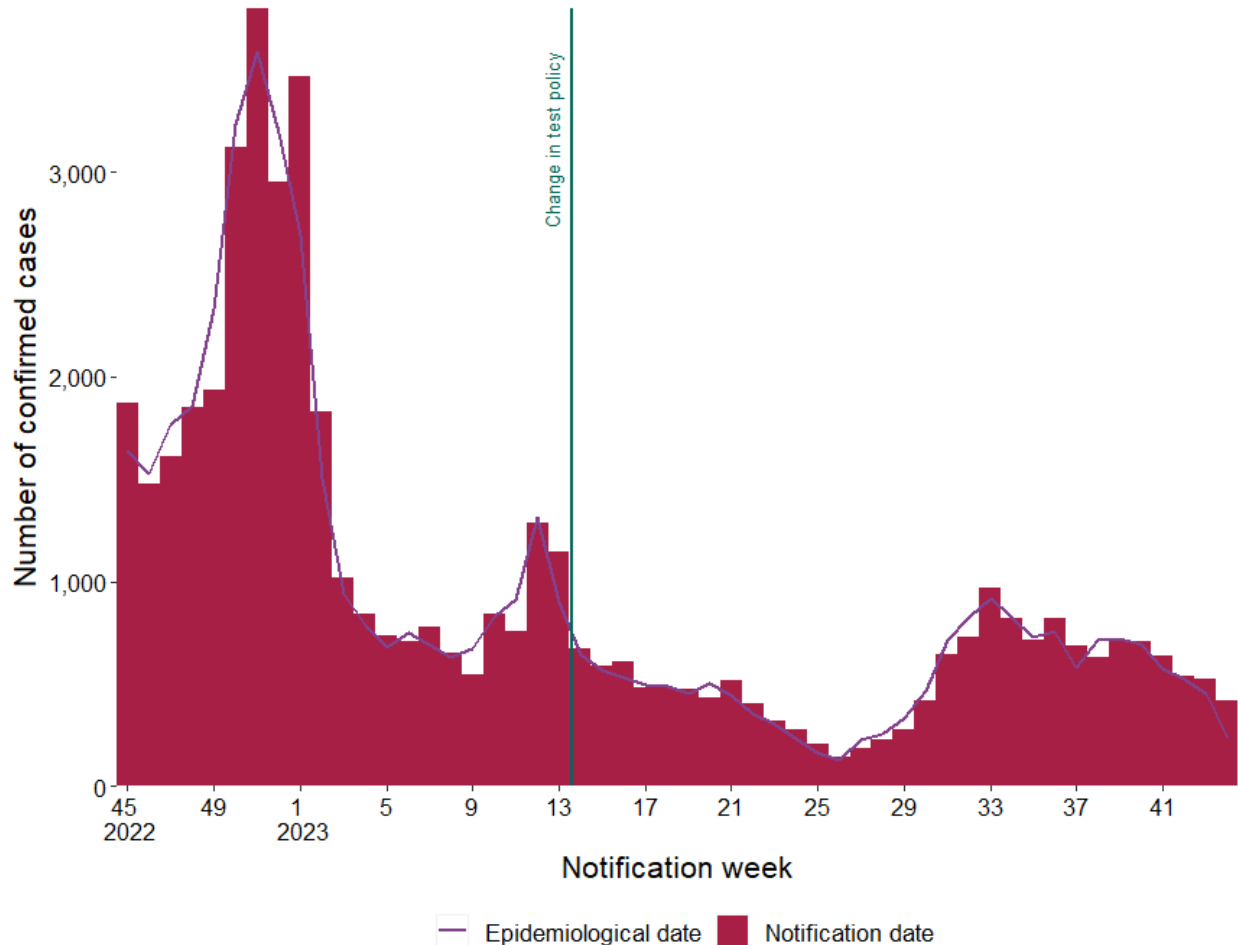


Figure 1a: Number of confirmed COVID-19 cases by notification week and epidemiological date in Ireland between week 45, 2022 and week 44, 2023. The red bars represent the number of confirmed cases by notification date. The purple line represents the number of cases by epidemiological date. The dark blue horizontal lines indicate a change in test policy<sup>1</sup>

<sup>1</sup> Since 30/03/2023 (week 13, 2023), community test centres closed and PCR testing was only performed based on clinical assessment.

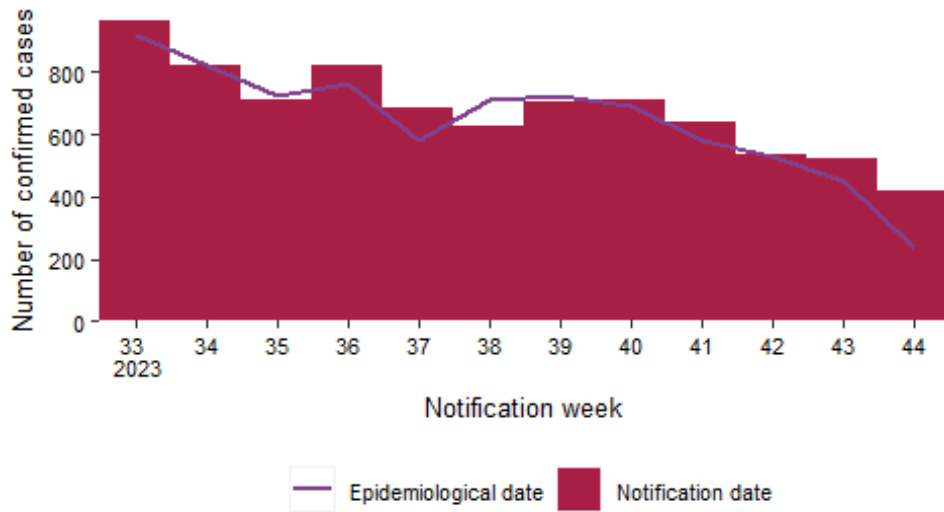
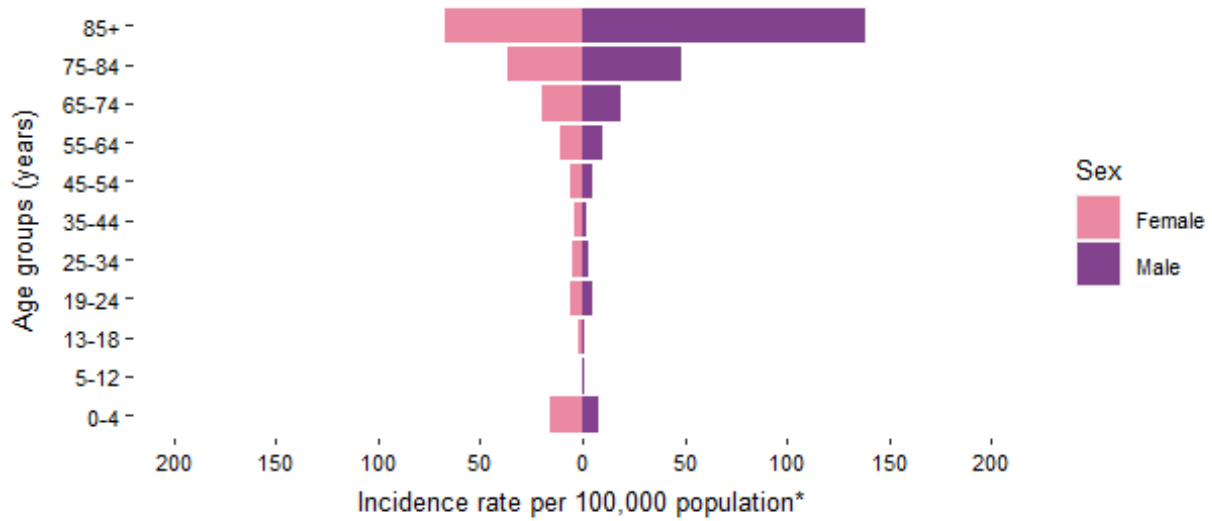


Figure 1b: Number of confirmed COVID-19 cases by notification week and epidemiological date in Ireland in the last 12 weeks. The red bars represent the number of confirmed cases by notification date. The purple line represents the number of cases by epidemiological date.

## Confirmed COVID-19 cases by age and sex

**Table 2:** Summary characteristics by age and sex of COVID-19 cases notified in Ireland during week 44, 2023 and 2023 to date

	Week 44, 2023		Total 2023	
	Number	Percentage	Number	Percentage
<b>Gender</b>				
Males	191	45.7	13,424	43.5
Females	227	54.3	17,459	56.5
M:F ratio	0.84		0.77	
<b>Age (years)</b>				
Mean age	58		57	
Median age	65		61	
Age range	0 - 98		0 - 103	
<b>Age groups (years)</b>				
0-4	39	9.3	1,374	4.4
5-12	3	0.7	324	1.0
13-18	4	1.0	416	1.3
19-24	19	4.5	1,000	3.2
25-34	26	6.2	2,987	9.7
35-44	24	5.7	3,603	11.7
45-54	35	8.4	3,416	11.1
55-64	52	12.4	3,540	11.5
65-74	72	17.2	4,228	13.7
75-84	82	19.6	5,817	18.8
85+	62	14.8	4,179	13.5
Unknown	NA	0.0	4	0.0



\*Excluding 0 for whom age is unknown, 0 for whom sex is unknown and 0 for whom both are unknown

Figure 2: Age and sex specific incidence rates of confirmed COVID-19 cases per 100,000 population for current week 44, 2023

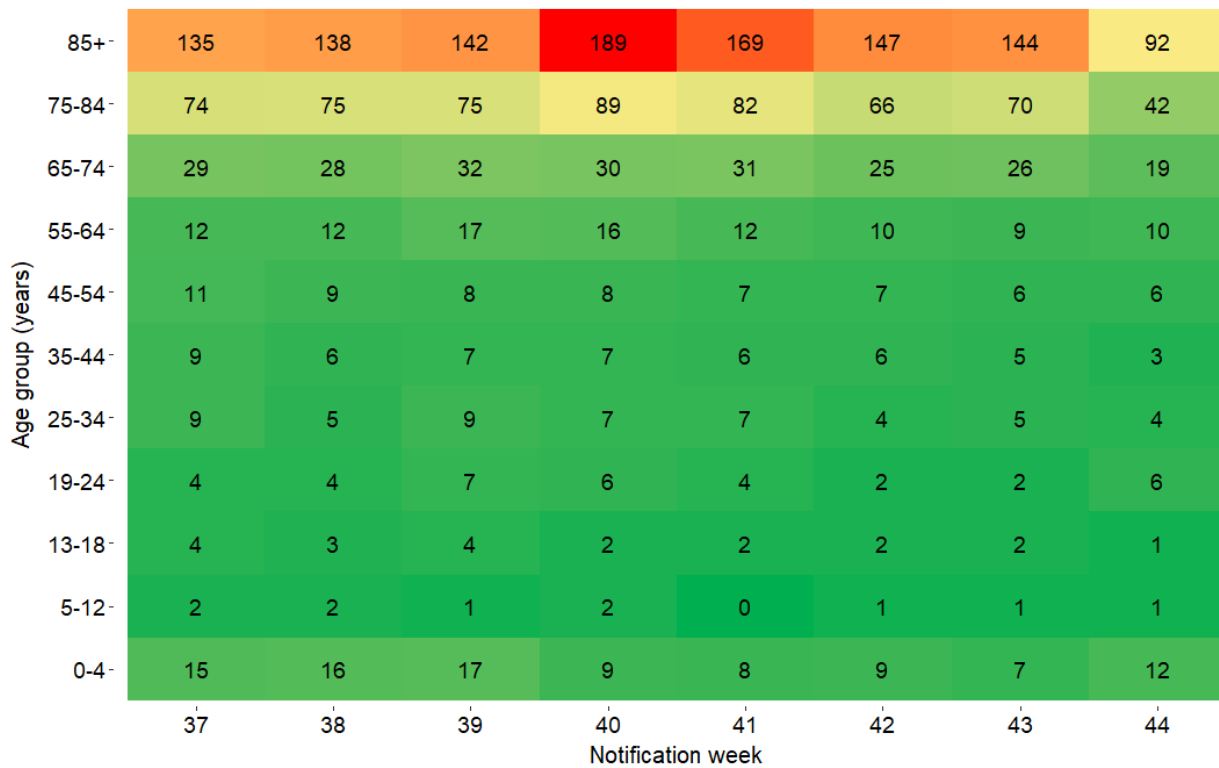


Figure 3: Heat map of weekly age-specific incidence rates of confirmed COVID-19 cases per 100,000 population in Ireland for the last 8 weeks

## Cases and incidence by county

**Table 3:** Characteristics of confirmed COVID-19 cases by county and descending incidence rate per 100,000 notified in Ireland, during week 44, 2023\*

County	Number of cases	Percent	Incidence rate per 100,000
Waterford	28	6.7	24.1
Carlow	11	2.6	19.3
Kilkenny	18	4.3	18.1
Wexford	26	6.2	17.4
Leitrim	5	1.2	15.6
Sligo	10	2.4	15.3
Offaly	11	2.6	14.1
Westmeath	11	2.6	12.4
Louth	14	3.3	10.9
Donegal	17	4.1	10.7
Mayo	14	3.3	10.7
Laois	9	2.2	10.6
Cavan	8	1.9	10.5
Tipperary	14	3.3	8.8
Dublin	110	26.3	8.2
Galway	21	5.0	8.1
Limerick	14	3.3	7.2
Kerry	9	2.2	6.1
Clare	7	1.7	5.9
Wicklow	8	1.9	5.6
Kildare	12	2.9	5.4
Cork	28	6.7	5.2
Monaghan	3	0.7	4.9
Roscommon	3	0.7	4.6
Meath	7	1.7	3.6
Longford	0	0.0	0.0

\* County data may not be accurately reflected in the most recent week due to ongoing data validations

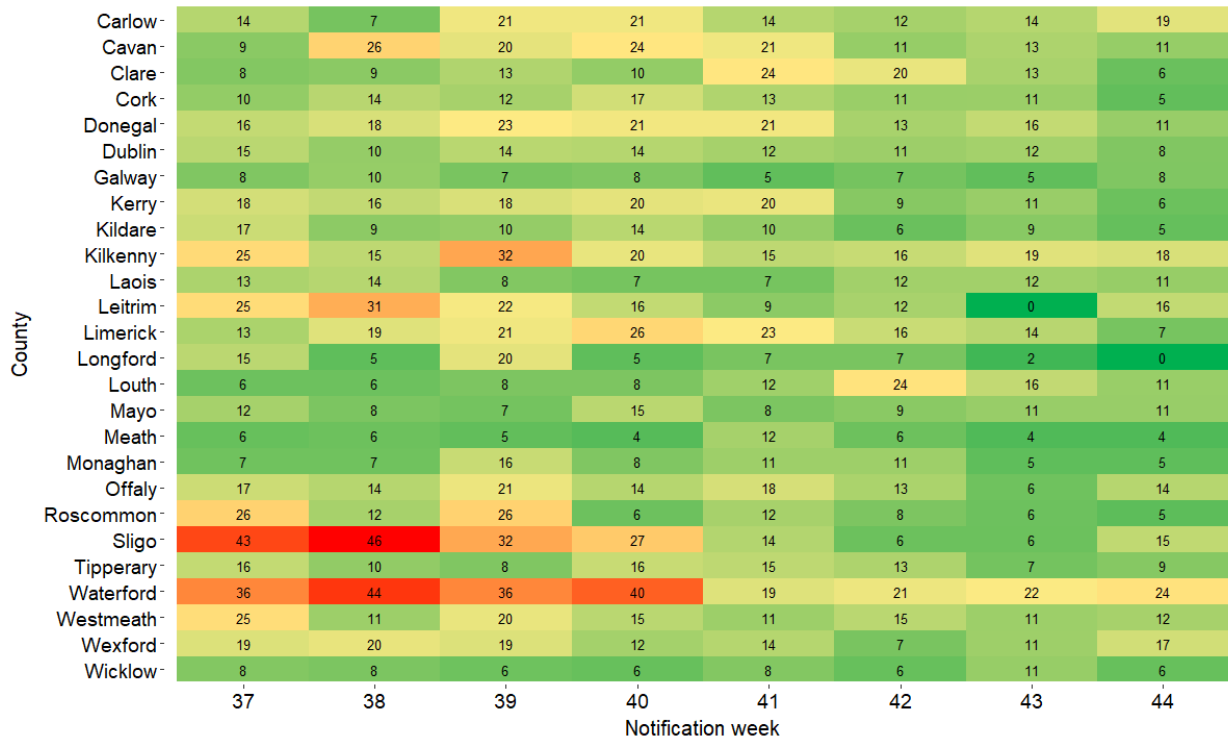


Figure 4: Heat map of weekly incidence rates of confirmed COVID-19 cases per 100,000 population, by county, notified in Ireland for the last 8 weeks



## Hospitalisations

A total of 194 hospitalised confirmed COVID-19 cases were recorded in the latest epidemiological week, week 44 2023.

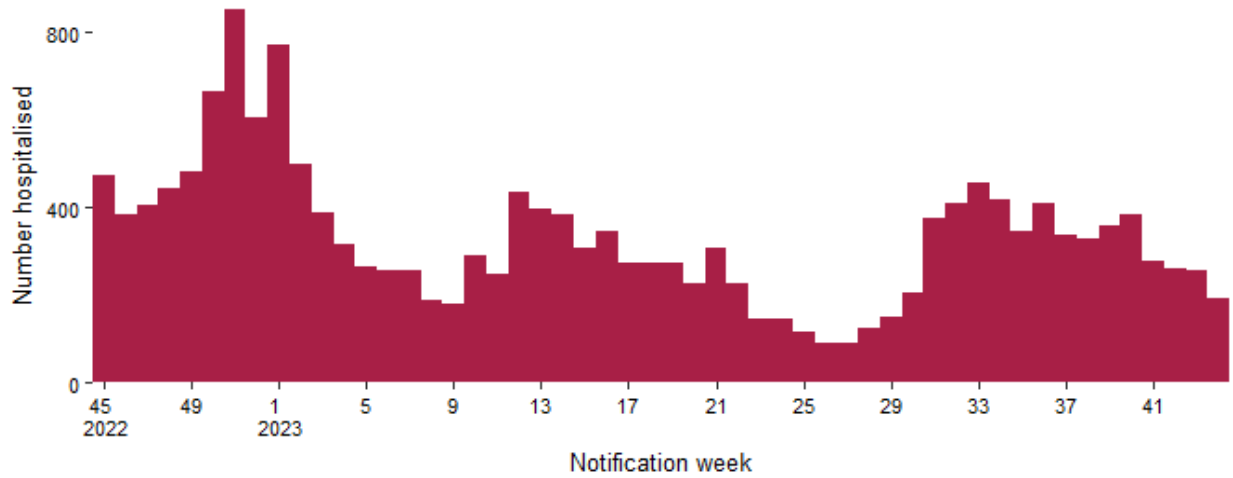


Figure 5: Hospitalisations among confirmed COVID-19 cases notified on CIDR in Ireland between week 45, 2022 and week 44, 2023

**Table 4:** Number of COVID-19 cases and hospital admissions by age group in Ireland for week<sup>2</sup> 44, 2023 based on week of notification<sup>3</sup>

Age group	Week 44, 2023			Total 2023		
	Total cases	Hospitalised cases		Total cases	Hospitalised cases	
	Number of cases	Number of cases	Percentage	Number of cases	Number of cases	Percentage
0-4	39	19	48.7	1,374	784	57.1
5-12	3	1	33.3	324	139	42.9
13-18	4	1	25.0	416	121	29.1
19-24	19	3	15.8	1,000	197	19.7
25-34	26	4	15.4	2,987	502	16.8
35-44	24	5	20.8	3,603	592	16.4
45-54	35	11	31.4	3,416	722	21.1
55-64	52	28	53.8	3,540	1,252	35.4
65-74	72	44	61.1	4,228	2,447	57.9
75-84	82	43	52.4	5,817	3,709	63.8
85+	62	35	56.5	4,179	2,541	60.8
Unknown	0	0	0.0	4	0	0.0

<sup>2</sup> Hospitalisations may be underestimated for recent weeks as the outcome may not yet have occurred or may not yet have been reported to CIDR

<sup>3</sup> Data are based on the date the case was notified on CIDR, and not the date of hospital admission

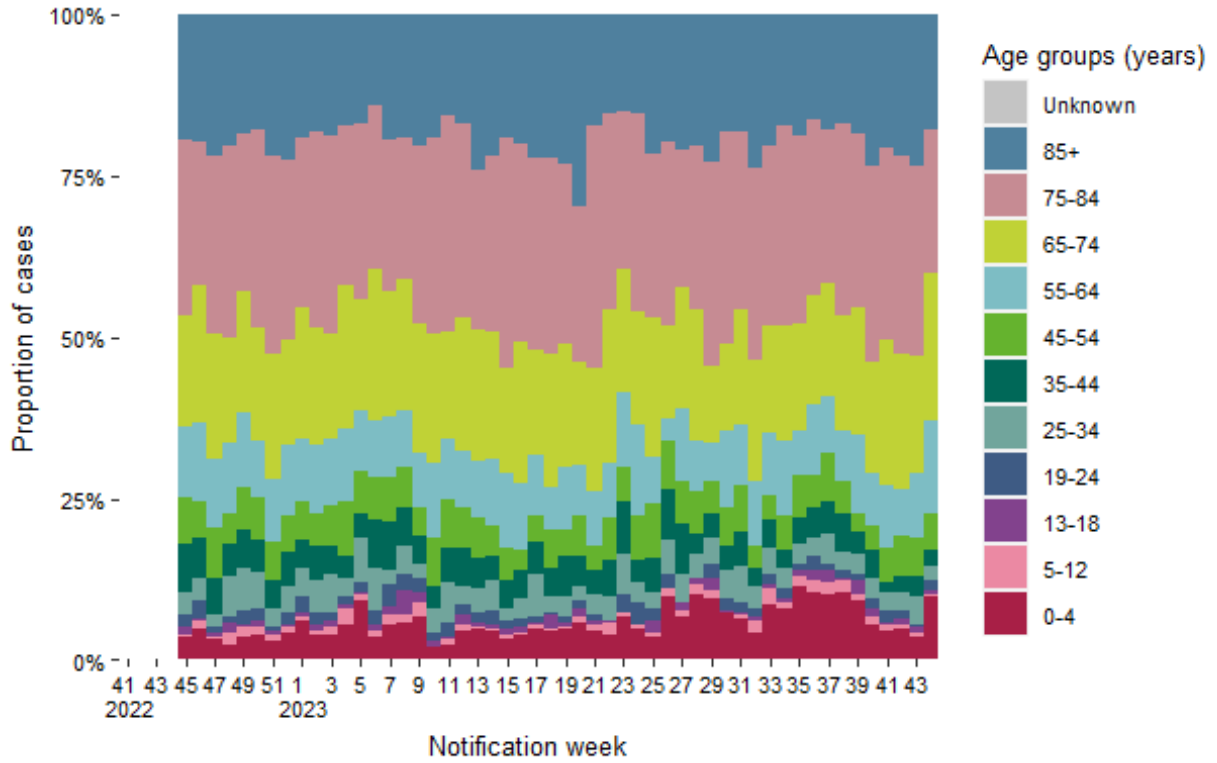


Figure 6: Age distribution of hospitalised confirmed COVID-19 cases notified on CIDR in Ireland between week 45, 2022 and week 44, 2023

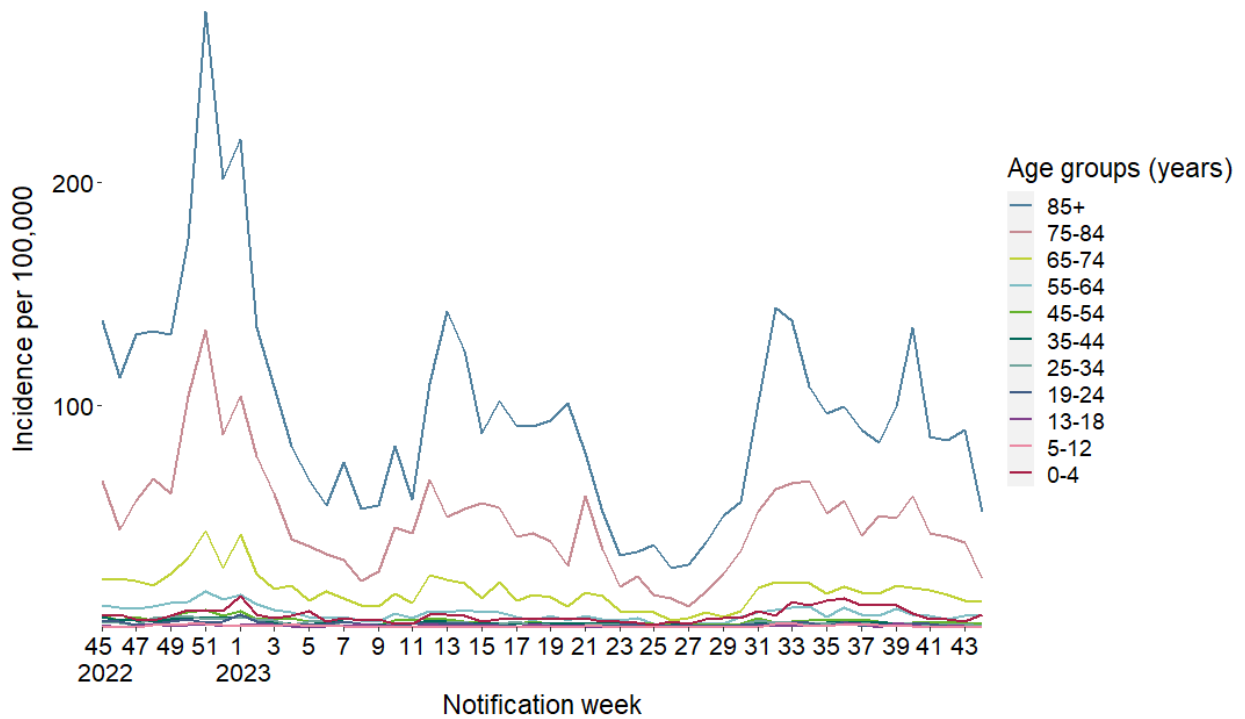


Figure 7: Incidence rate by age group of hospitalisations among confirmed COVID-19 cases on CIDR in Ireland between week 45, 2022 and week 44, 2023

## ICU admissions

A total of 0 COVID-19 cases were admitted to ICU in the latest epidemiological week<sup>3</sup>, week 44 2023.

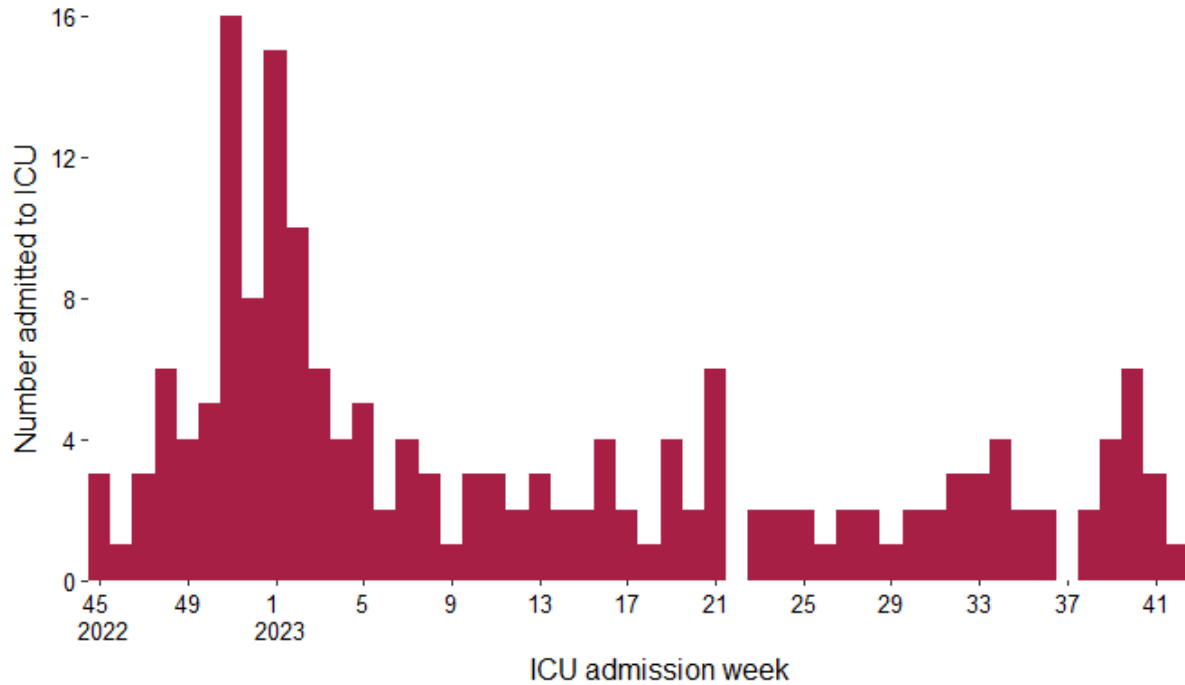


Figure 8: Number of COVID-19 ICU admissions in Ireland by week of ICU admission, between week 45, 2022 and week 44, 2023<sup>4</sup>

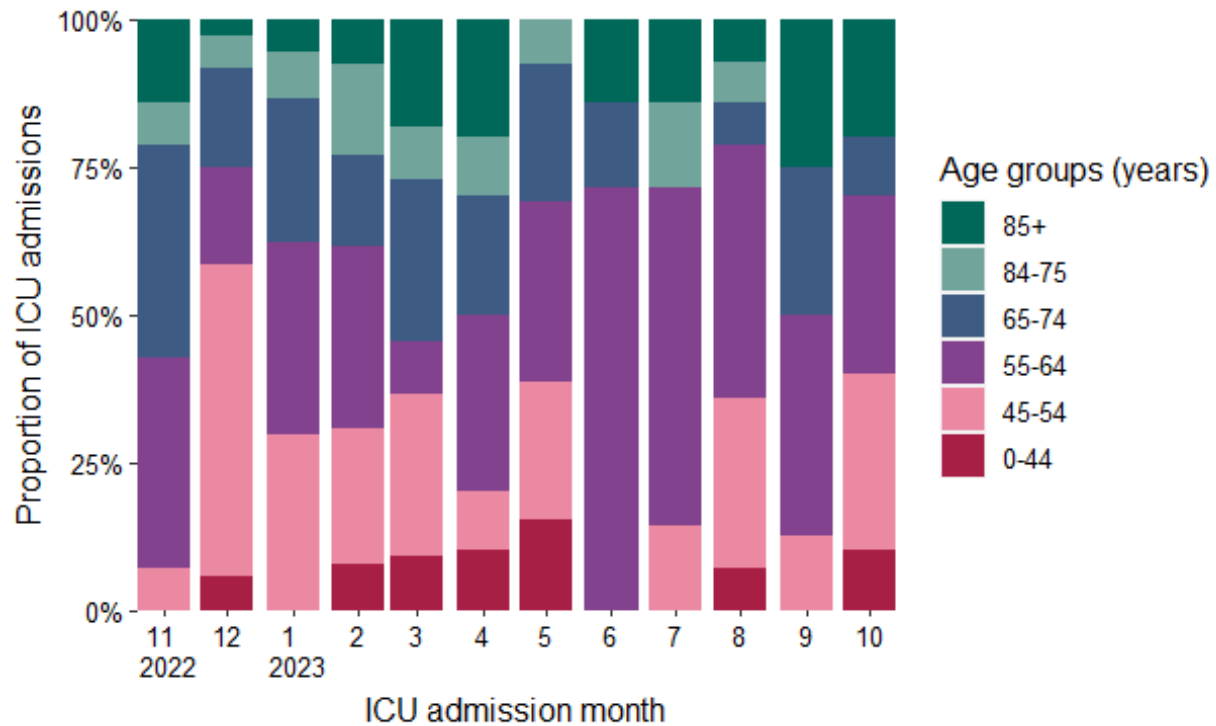


Figure 9: Age distribution of confirmed COVID-19 cases admitted to ICU by month of admission between November, 2022 and October, 2023

<sup>4</sup> Please note that most recent weeks may not yet reflect all admissions

## Deaths

Please note the below figures and tables include all cases (confirmed, probable and possible) who have died.

A total of 2 cases had a date of death in the latest epidemiological week, 44. The mean and median age of those who died in that week was 85 years respectively.

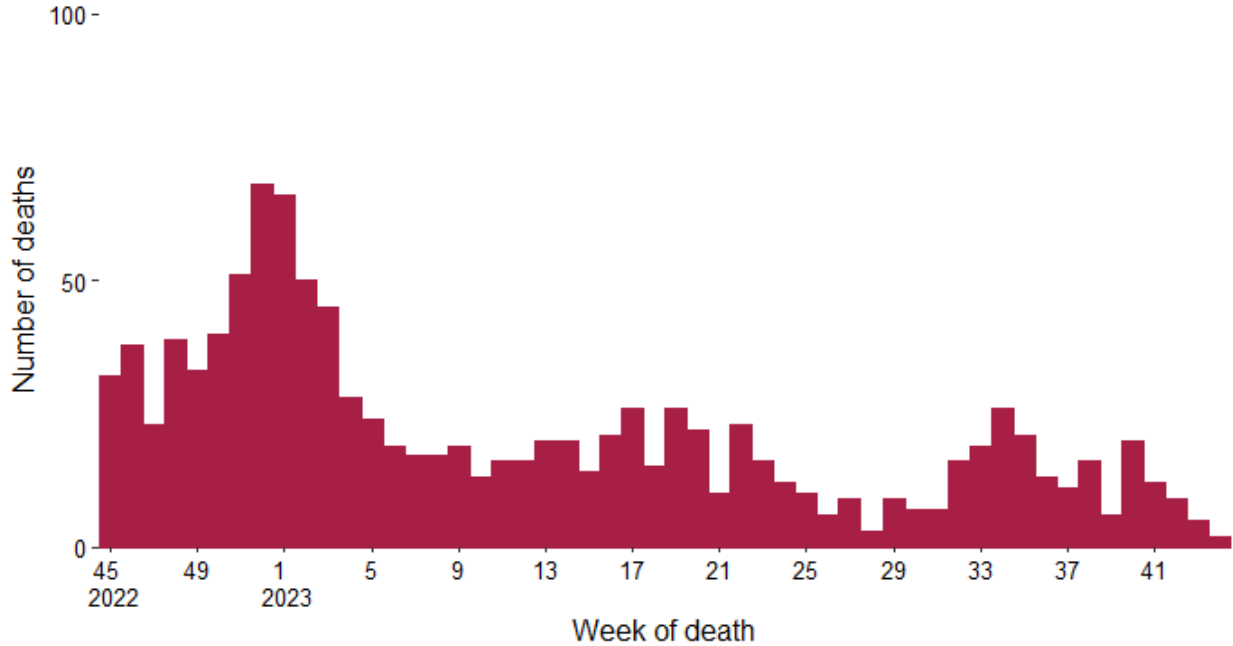


Figure 10: Total number of COVID-19 deaths notified by week of death, cases with a date of notification from week 45, 2022 to 44, 2023<sup>5</sup>. Date of death missing for 0 of the reported deaths

<sup>5</sup> Please note that most recent weeks may not yet reflect all deaths

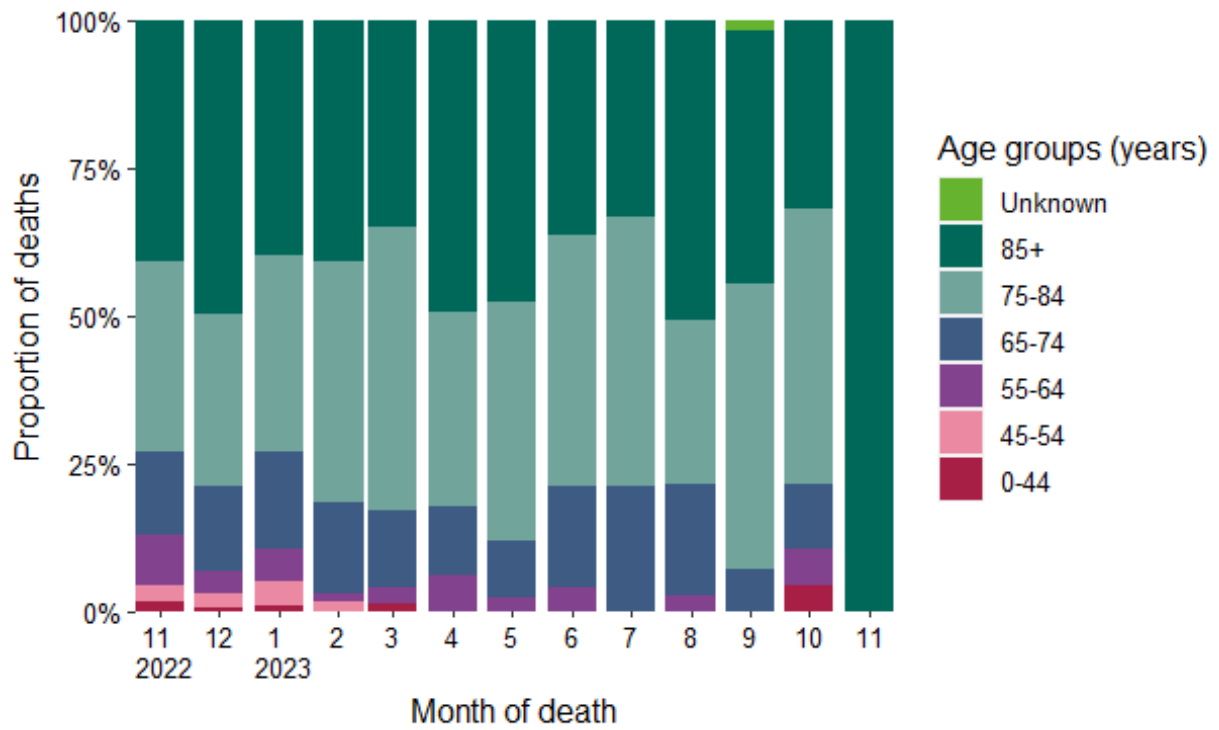


Figure 11: Age distribution of COVID-19 deaths notified on CIDR in Ireland between November, 2022 and October, 2023

## Laboratory data of SARS-CoV-2 PCR tests

In week 44, a total of 3,889 SARS-CoV-2 tests were performed, of which 424 (10.9%) were positive.

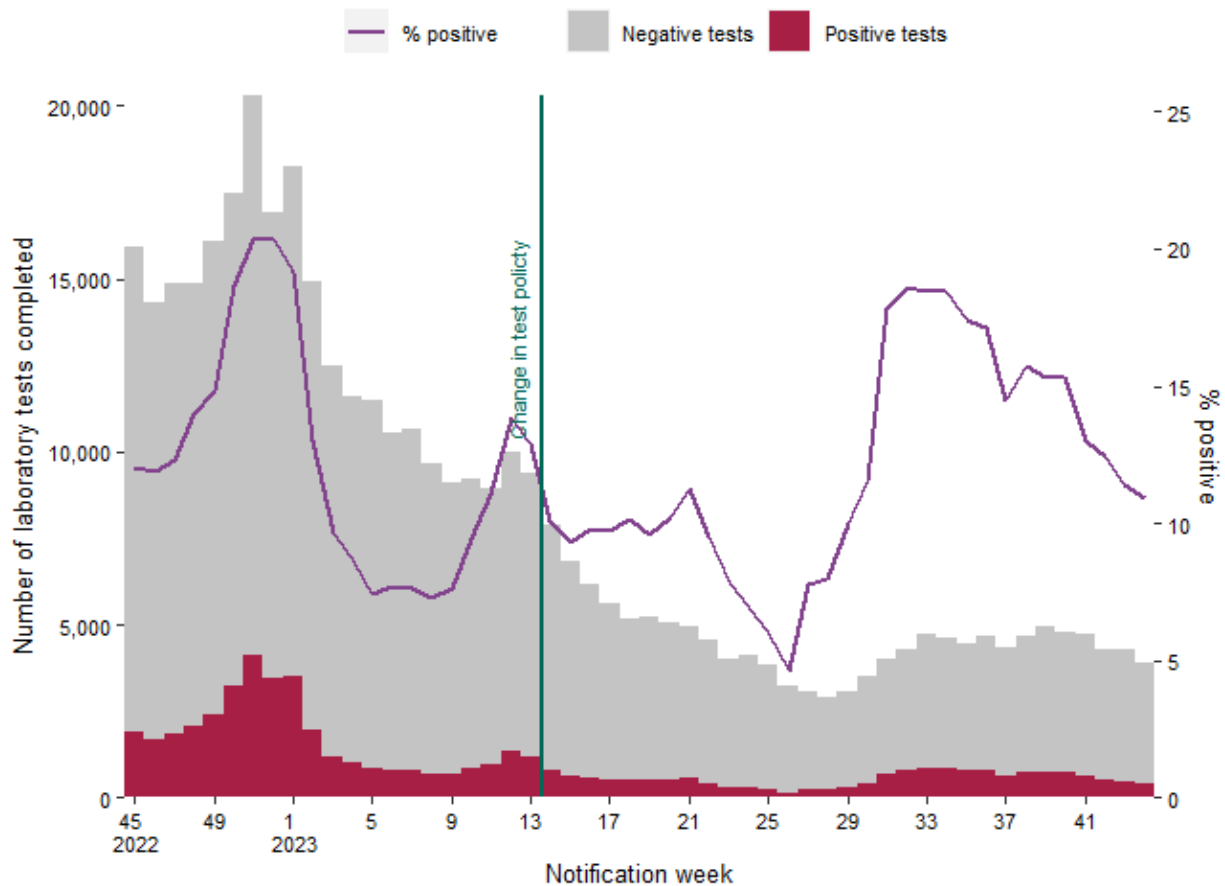


Figure 12: Number of completed laboratory tests by result and % positive tests<sup>6</sup> in Ireland between week 45, 2022 and week 44, 2023. Data source: Deloitte Ireland LLP<sup>7</sup>

<sup>6</sup> Positive tests refer to all positive specimens and includes duplicates and individuals who were retested.

<sup>7</sup> Since 30/03/2023 (week 13, 2023), community test centres closed and PCR testing was only performed based on clinical assessment.

## Notes

### Technical Notes

#### 1. Data Source

Data are based on statutory notifications and were extracted from Computerised Infectious Disease Reporting (CIDR) system and the HSE COVID care tracker. Data are provisional and subject to ongoing review, validation and update. As a result, figures in this report may differ from previously published figures. Slide with Laboratory testing for SARS-CoV-2 data provided by Deloitte Ireland LLP

#### 2. Epidemiological date

Epidemiological date is based on the earliest of dates available on the case and taken from date of onset of symptoms, date of diagnosis, laboratory specimen collection date, laboratory received date, laboratory reported date or event creation date/notification date on CIDR. By using this date rather than event creation/ notification date, adjusts for any delays in testing/notification. Further information on epidemiological dates and weeks can be found on the [HPSC website](#).

#### 3. Population data

Population data were taken from Census 2016. Data were aggregated into the following age groups for the analysis: 0-4 years, 5-12 years, 13-18 years, 19-24 years, 25-34 years, 35-44 years, 45-54 years, 55-64 years, 65-74 years, 75-84 years and  $\geq 85$  years.

### Acknowledgements

Sincere thanks are extended to all those who are participating in the collection of data and reporting of data used in these reports. This includes the HSE COVID-19 Contact Management Programme (CMP), staff in ICU units, notifying clinicians, laboratory staff, public health doctors, nurses, surveillance scientists, microbiologists and administrative staff.

### Please refer to the Health Protection Surveillance (HPSC) website for

- [Epidemiology of COVID-19 in Ireland infohub](#)
- [Outbreaks/clusters in Ireland COVID-19 weekly report](#)
- [Monthly report on COVID-19 deaths reported in Ireland](#)
- [SARS-CoV-2 wastewater surveillance programme weekly reports](#)
- [Virus variants in Ireland COVID-19 summary report](#)
- [Epidemiology of intensive care admissions in cases of COVID-19 in Ireland](#)